

# Blueprint: capital projects

## Full steam ahead

The Bowes Museum is delighted to announce that its £3.3m bid to The Heritage Lottery Fund has been successful, meaning exciting proposals are set to go full steam ahead.

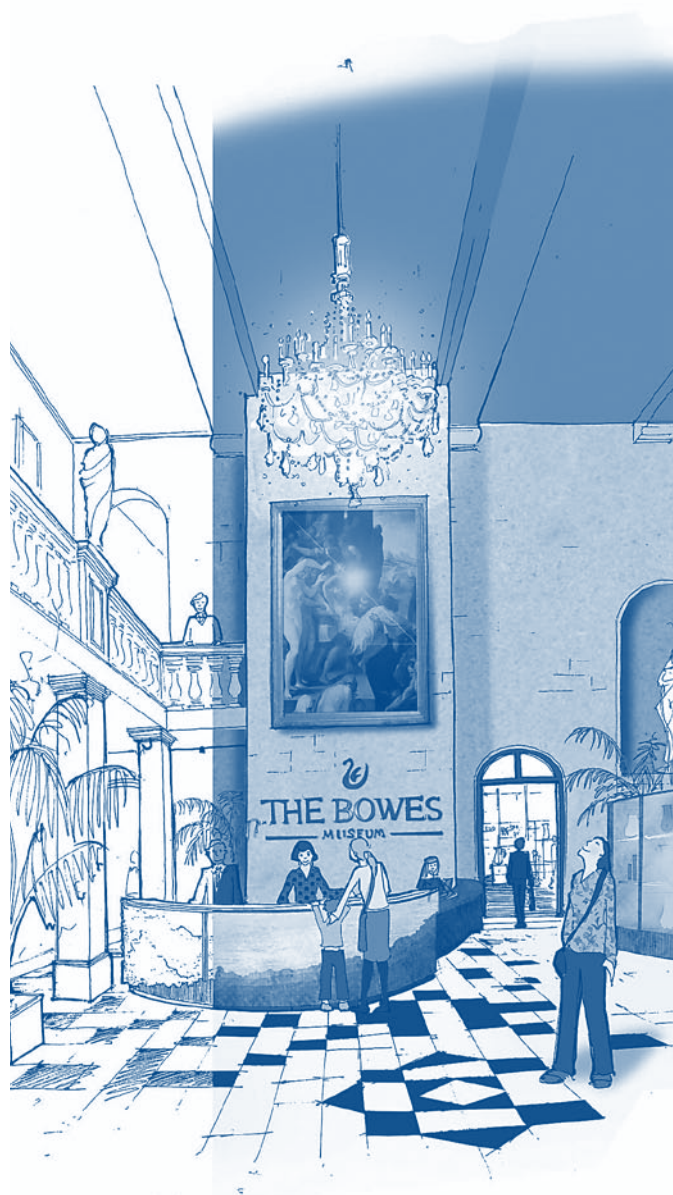
The HLF award follows on from a recent announcement that the Museum is to receive £500,000 from The Monument Trust, one of the Sainsbury Family Charitable Trusts. We are also working closely with the regional development agency One NorthEast through the County Durham Economic Partnership to achieve further capital investment.

Exciting designs include stunning new galleries as well as a redesigned entrance hall, an easy access shop and a larger Café Bowes, not to mention a brand new archive, library and study area in the dome and a suite of three lifelong learning vaults. The project is being managed by Turner & Townsend, the Quantity Surveyor is Turner & Holman and the Interior Architect is Colin Williams Design. The new Silver and Metals Gallery is designed by Continuum and the Textiles and Dress gallery by Blue, the design company. The completion of the roof restoration will be managed by Peter Pace Architects.

The Bowes Museum is looking towards achieving its goal of becoming a world class visitor attraction in the North of England.



**Adrian Jenkins**  
Director



The north face of the first floor of this magnificent building is being transformed back to its original layout, making the most of the lofty ceilings and large spaces that form the original architectural scheme of the building.

A new Textile and Dress Gallery will occupy the North West wing, creating a textile centre of national importance in the North of England.

Presenting collections in a stylish and modern setting, the Gallery will demonstrate the impact of textiles both in fashionable dress and the historic interior. A timeline will illustrate trends of the day starting from 1750s to the 21st Century. A large glass cube within the gallery will be used as accessible storage and walk-in study area, enabling activities such as public conservation, gallery talks and seminars, and demonstrations of stitching to take place.

The new gallery will allow a far greater proportion of the collections to be shown than ever before. The aim is to present textiles and dress in an exciting way to be enjoyed by all audiences.

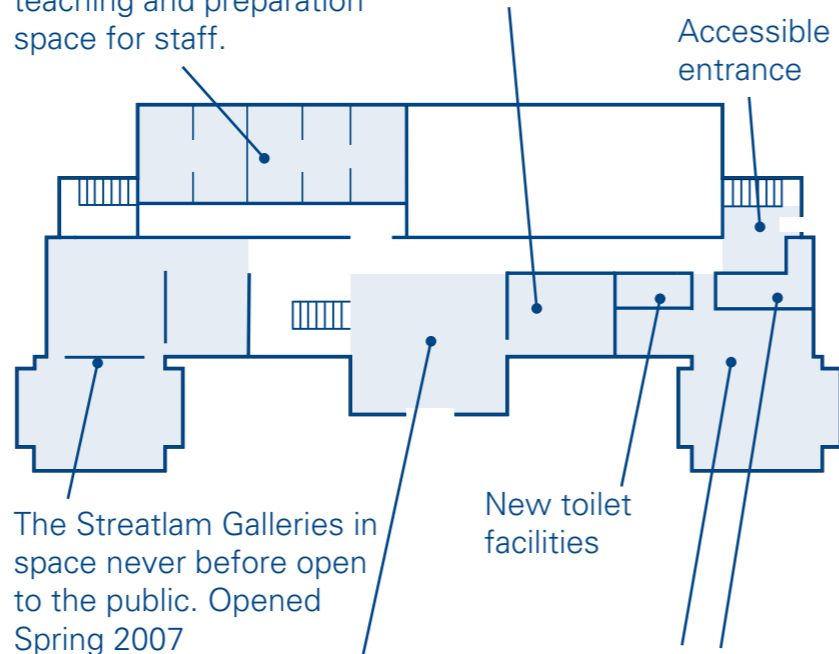
# Outline of projects planned for completion by 2012

## Ground Floor

New suite of learning rooms in vaults, with 'wet' areas for art and craft, classroom space for teaching and preparation space for staff.

Shop moved closer to reception area and extended to allow a wider range of products

Accessible entrance

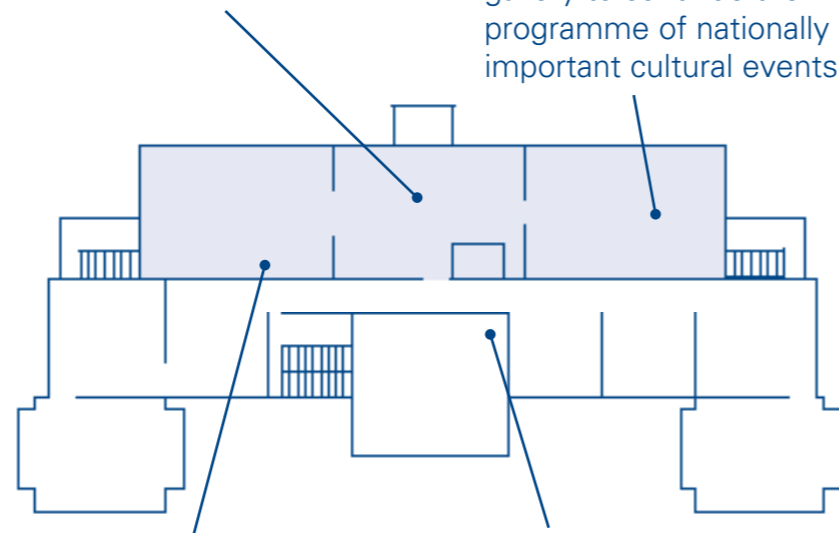


Refurbished reception area, including new visitor operated lift

## First Floor

Creation of a new display of British Decorative Arts

Creation of a new temporary exhibition gallery to continue the programme of nationally important cultural events



New Textile and Dress Gallery presenting these popular collections in a stylish, modern setting

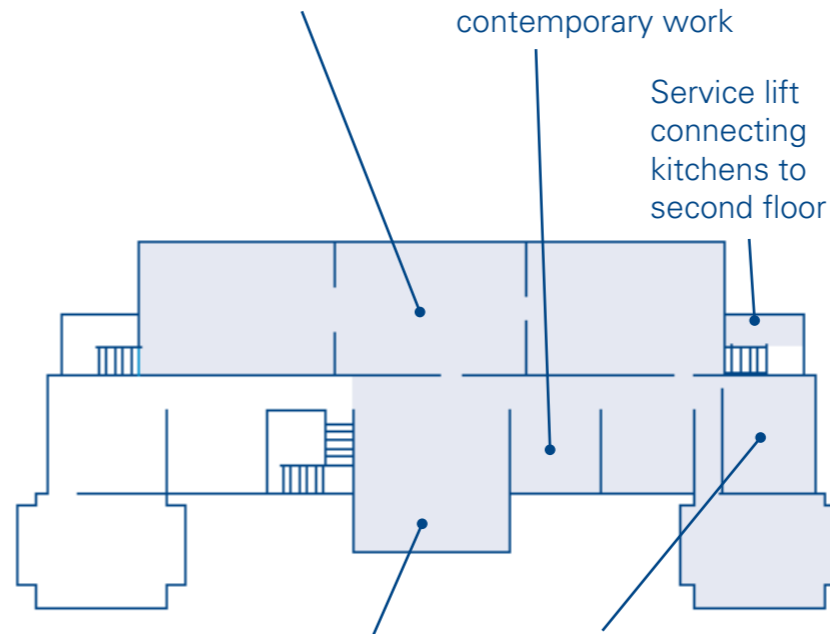
Visitor operated lift improving access to upper floors

## Second Floor

Picture galleries re-hung to allow many more paintings on display

Refurbished space to display community based exhibitions and contemporary work

Service lift connecting kitchens to second floor



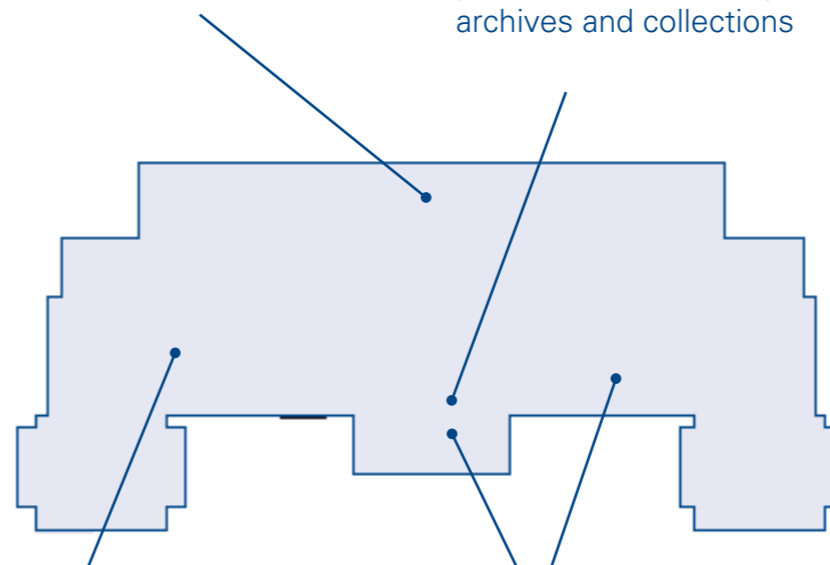
Creation of a Silver and Metals Gallery will act as a prelude to the Museum's iconic Silver Swan in the neighbouring picture gallery

A function suite of three rooms to service lifelong learning opportunities and facility hire

## Third Floor & Roof

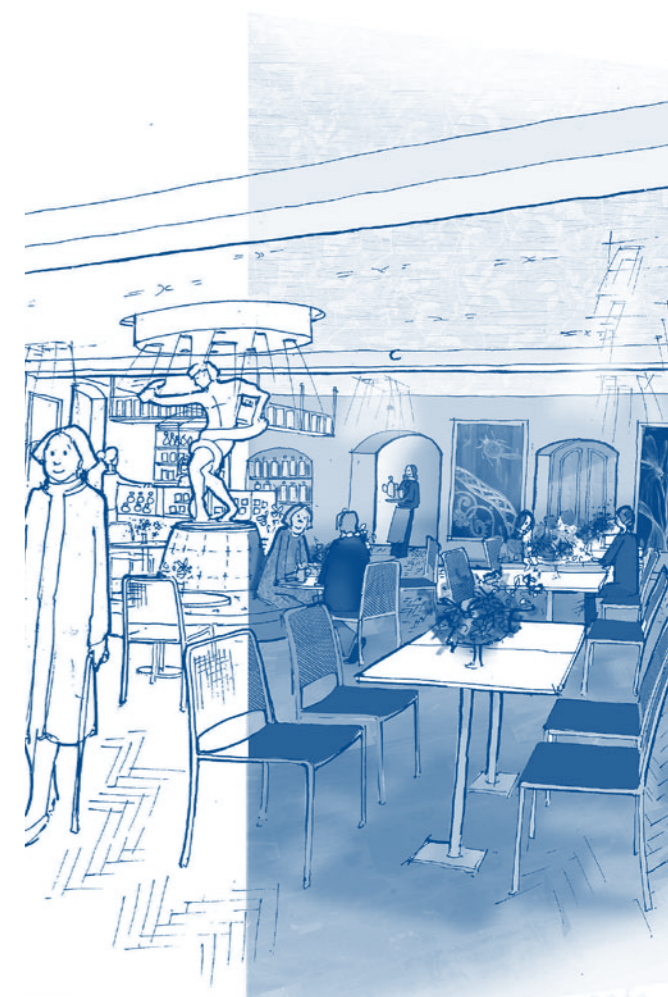
Roof fully repaired

Study centre allowing public access to library, archives and collections



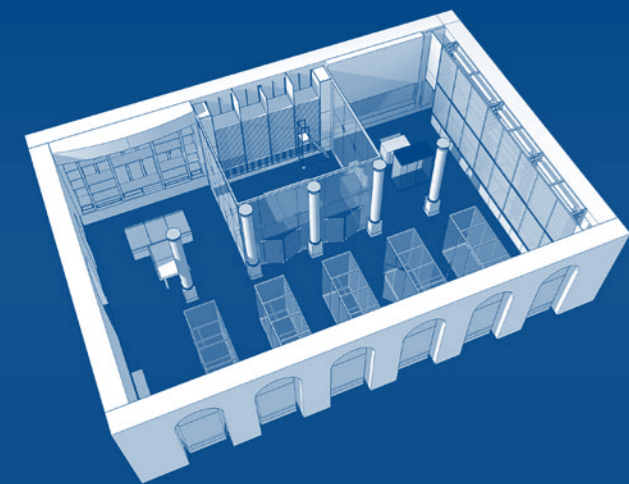
Extended office space for growing workforce

Improved storage spaces and conservation facilities allowing more objects to be stored in better conditions



The new enlarged Café Bowes will continue to serve its high quality fare, featuring locally produced food. Table service will be introduced, making a visit to Café Bowes an even more relaxed dining experience. As well as serving its acclaimed lunch menu, homemade cakes and scones, there will be special menus available on celebrations such as Mothers' Day, and selected evening events to mark exhibition openings and other suitable occasions.

The Museum Shop is moving closer to The Entrance Hall, with a new entrance leading from the reception area. New lines of stock are being developed taking inspiration from the Museum's own fabulous collections. Patterns from 19th and 20th century dress featured on bags and other items, a new greetings card range highlighting details from paintings and other objects, and a new fluffy Silver Swan are some of the items that will be available.



## How you can help

### Make a donation

Name .....

Address.....

.....

Telephone.....

E-mail.....

Size of donation £ .....

Please make cheque or CAF voucher payable to **The Bowes Museum**. We can also accept credit card donations by post or phone.

### Gift Aid

If you are a UK taxpayer The Bowes Museum can claim an extra 28p for every £1 donated, at no extra cost to yourself.

*I would like The Bowes Museum to treat as Gift Aid all donations I make from 1st January 2008 until I notify otherwise. I will pay income and/or capital gains tax equivalent to the tax reclaimed each year.*

Signed .....

Date .....

### More information

For more information about supporting The Bowes Museum's work through exhibitions, events and education programmes please contact the Development Team on 01833 694 613 or [development@thebowesmuseum.org.uk](mailto:development@thebowesmuseum.org.uk)

There are opportunities for corporate sponsorship, individual giving and support from trusts and foundations.

**A gift in your will** is a tax-effective and lasting way of supporting The Bowes Museum. We will take the greatest care to ensure that your wishes are respected, and can advise on appropriate wording for your will to facilitate this. If you would like more information please contact the Development Team.

**Thank you to our supporters** who have invested in the vision so far:

Heritage Lottery Fund  
One NorthEast through the County Durham Economic Partnership  
English Heritage  
Northern Rock Foundation  
The Monument Trust  
The Foyle Foundation  
DCMS / Wolfson Museum and Galleries Improvement Fund  
Garfield Weston Foundation  
European Regional Development Fund Designation Challenge Fund  
Durham County Council  
The Shears Foundation  
County Durham Foundation  
The Friends of The Bowes Museum  
The Headley Trust  
The Catherine Cookson Charitable Trust  
Sir James Knott Trust  
Mercers Charitable Foundation  
Welton Foundation  
Idlewild Trust  
Fenwick Ltd  
P T Settlement  
Margaret Phyllis Mewhort Trust  
Anon and individual donors

### Keep informed

Join the free mailing list to keep informed of upcoming exhibitions and events. Information can be sent by post or by email. Please contact the Marketing Team using the contact details below.

### Contact us

The Bowes Museum, Barnard Castle,  
County Durham, DL12 8NP  
t: 01833 690 606  
e: [info@thebowesmuseum.org.uk](mailto:info@thebowesmuseum.org.uk)  
w: [www.thebowesmuseum.org.uk](http://www.thebowesmuseum.org.uk)

This leaflet is available in a larger format on request.

Registered Charity No. 1079639

